

# Magnetic Stripe Card Reader Installation

The optional magnetic card reader requires the installation of a simple driver; it is located in a subdirectory of the folder where the Unilogger program is installed, entitled 'Magstripe Driver'.

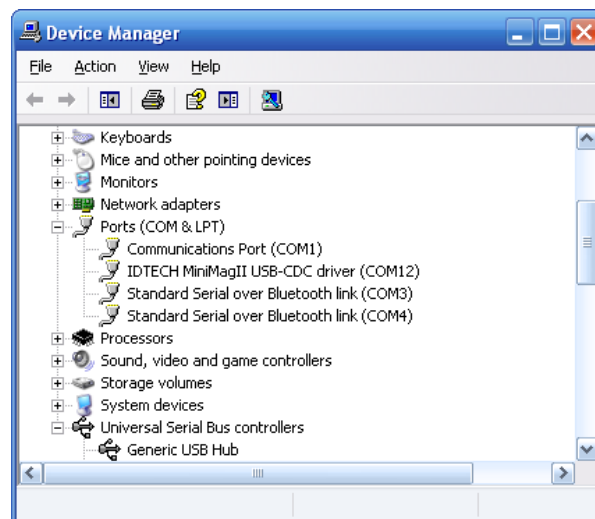
Before plugging in the magnetic stripe reader, first locate the Magstripe Driver directory, open it, click once to highlight the file named 'Mm2Usb232.inf', right-click it, and select 'install'. The driver will then install itself.

You can then plug the mag stripe reader into an available USB port. You will hear a tone indicating that the device has been detected.

## Locating the COM port

Before running Unilogger, you must first determine the COM port number assigned to the mag stripe reader. To find it, right-click on 'My Computer', select 'Properties', click on the 'Hardware' tab, and click on 'Device Manager'.

You can then expand the item named 'Ports (COM & LPT)', and you will see what devices are mapped to Com ports:



In this example, the device you are looking for is named 'IDTECH MiniMagII USB-CDC driver (COM12)', and the COM port number you'll need to configure the mag stripe reader is 12. The COM port number in your particular system may be different.

Configuration/initialization of the mag stripe reader is performed within Unilogger, by selecting 'Options' and selecting the tab marked 'Mag Stripe Options'. You'll need a sample student ID card, to perform the initialization.