

1

Pairing the Scan & See scanner to your computer

Before the Scan & See can be used, it must be 'paired' with the PC/MDT it is intended to be used with. This process identifies the Scan & See to a particular PC/MDT, and only needs to be done one time. Once it is done, the pairing is permanent and nonvolatile, until/unless, for any reason, the device needs to be 'un-paired' (for example, if the user decides to use it with a different PC/MDT. Please note that only one Scan & See can be paired with any particular PC.

Before you start...

The Scan & See is designed to be used only with the Bluetooth USB adaptor provided by DataFetch. This adaptor is a class 1 device, meaning that it has extended range (in excess of 200 feet). If your computer has a built-in Bluetooth radio, it will be a class 2 device, with a range of less than 30 feet; furthermore, it may not be compatible with software from DataFetch or any third party supplier verified by DataFetch.

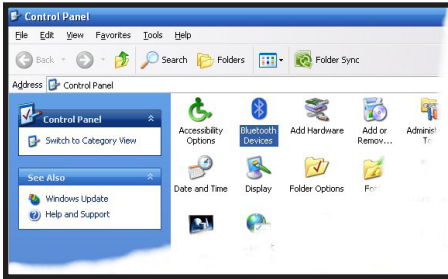
Therefore, if your computer does have a built-in Bluetooth radio, it must be disabled first. The easiest way to do this is to use the Windows Device Manager. To use it, right click on 'My Computer', select 'Properties', select the 'Hardware' button, and then click on 'Device Manager'. Expand the 'Bluetooth Radios' item, as shown at right:



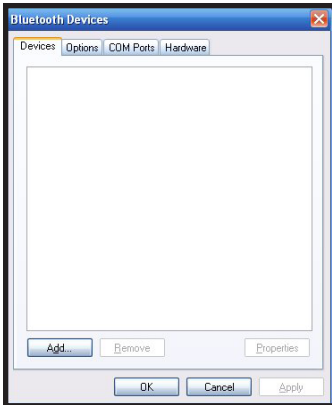
Under 'Bluetooth Radio', you will see two essential items: 'Generic Bluetooth Radio', and 'Microsoft Bluetooth Enumerator'. These two items must remain. Any OTHER item in this category would be related to a built-in Bluetooth radio, and should be uninstalled by right-clicking on the item, and then selecting 'Uninstall'.

In addition, some laptops used for computer service may be delivered from the factory with a Toshiba Bluetooth driver pre-installed, either as 'trial-ware', or as a licensed copy. The existence of this driver on your computer will interfere with the Scan & See, and must be removed. To remove it, press 'START', 'Control Panel', and 'Add/Remove Programs'; search for any item including the words 'Toshiba' and 'Bluetooth', and uninstall that item.

Once this is done, you can insert the supplied Bluetooth adaptor into an available USB 2.0 slot on your computer. It will be automatically recognized by Windows.



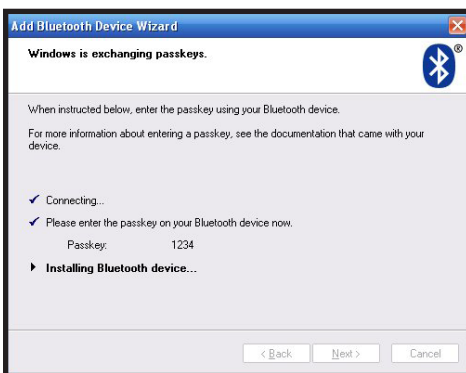
1. Start by locating the Bluetooth icon, which can usually be found in your Control Panel. The icon is a vertical blue oval with a logo in the center, as shown here. Click it to launch the Bluetooth management panel.



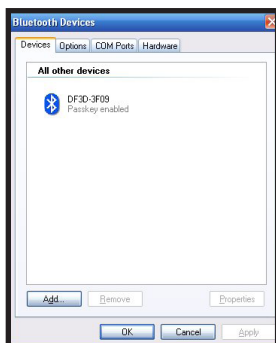
3. You should now be seeing the 'Bluetooth Devices' application window. You may see icons for other bluetooth devices in the window, if you are using any. Click on the 'add' button.



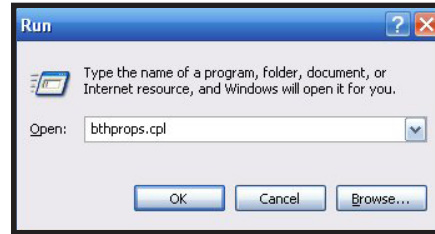
5. After 5 to 10 seconds, you will see your scanner device appear in the window, with a name that begins with either 'DF2D' or 'DF3D'. Click on the device icon, and press the button labelled 'next'



7. It will take from 5 to 10 seconds for the pairing process to complete.



9. When the process is complete, the 'Bluetooth Devices' control panel will show your scanner device. You can now press and release the scanner button to shut down the scanner. Now click on the tab marked 'COM Ports'.



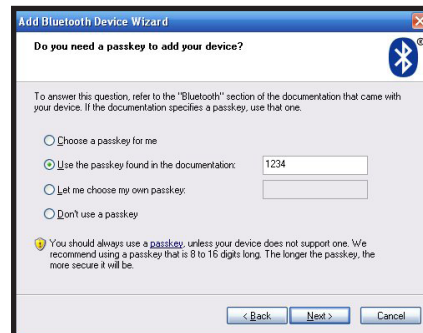
2. If the Bluetooth icon cannot be found in your control panel, you can also start it by clicking on 'Start', then 'run', and then typing bthprops.cpl into the edit box.



4. You will now see the Bluetooth Device Wizard on your screen. Click on the check box labeled 'My device is set up and ready to be found', but don't click on the button labelled 'next' just yet.



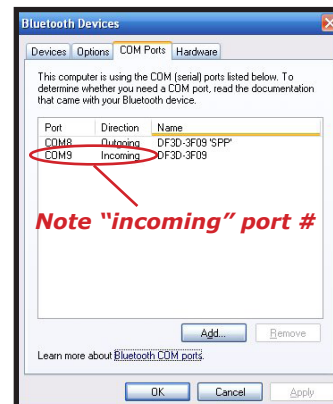
Now press and hold the button on your scanner for at least six seconds, until you hear a series of three high pitched beeps, followed by a low pitched beep every two seconds, indicating the scanner is now "discoverable". When you hear these sounds, press the button labelled 'next'



6. Select the button labelled 'Use the passkey found in the documentation', and enter in the passkey, which is '1234', then press 'next'



8. You will now see the Bluetooth Wizard's completion screen indicating pairing is complete.



10. Record the Com port number whose direction is labelled 'incoming'. This number will be needed when installing most applications. You can now press the 'OK' button. The pairing process is complete.